

MISTY MOUNTAIN FALL-WINTER 2011

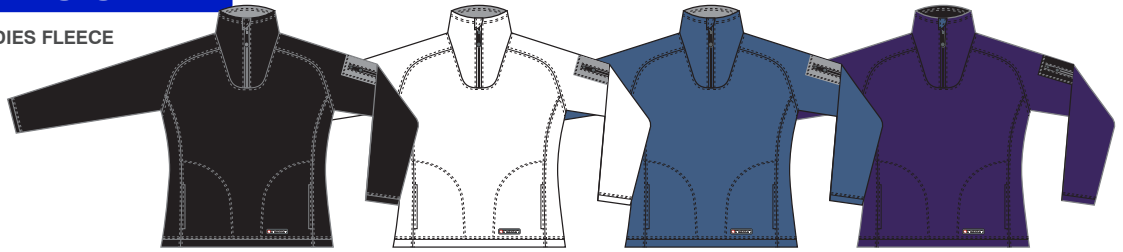
LADIES FLEECE & VESTS

CAMDEN

LADIES FLEECE

- Constructed in warm **ULTRASOFT 180 FLEECE**
- 2 front pockets • Zippered sleeve pocket

Sizes: S, M, L, XL



Pullover: No. 9640
Trim: BLACK/GREY

No. 9641
WHITE/GREY

No. 9642
DENIM/GREY

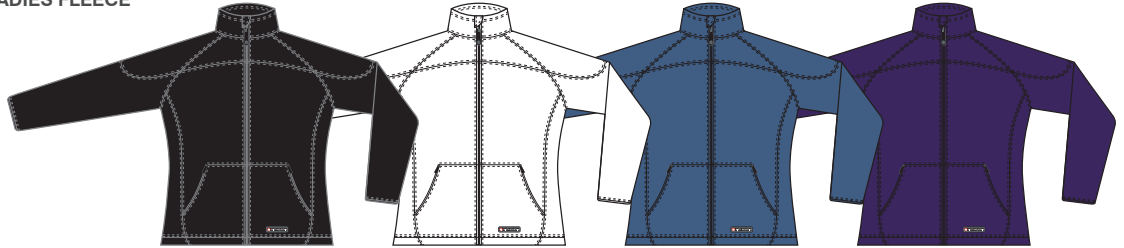
No. 9643
PURPLE/BLACK

MICRON

LADIES FLEECE

- Constructed in warm **ULTRASOFT 180 FLEECE**
- 2 front zippered kangaroo pockets • Elasticized cuffs

Sizes: S, M, L, XL



No. 9645
BLACK

No. 9646
WHITE

No. 9647
DENIM

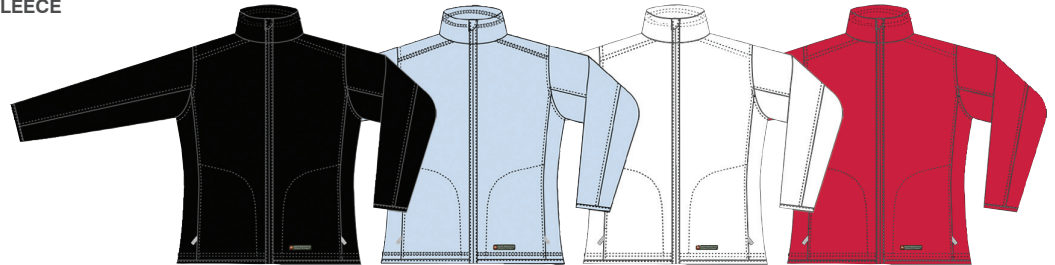
No. 9648
PURPLE

DIVA

LADIES FLEECE

- Constructed in warm **ULTRASOFT 230 FLEECE**
- Nylon mesh lining • Full front zipper • 2 front zippered pockets • Elasticized cuffs

Sizes: S, M, L, XL



Jacket:
Mesh Lining:

No. 9674
BLACK
MIST GREY

No. 9676
POWDER
MIST GREY

No. 9677
WHITE
MIST GREY

No. 9678
RED
MIST GREY

FURRY

LADIES INSULATED

- Constructed in soft **CORAL** fleece fabric • Full front zipper • 2 zippered side pockets
- Extra high warm collar • Stretch binding cuffs and waistband

Sizes: S, M, L, XL



No. 5495
BLACK

No. 5496
WHITE

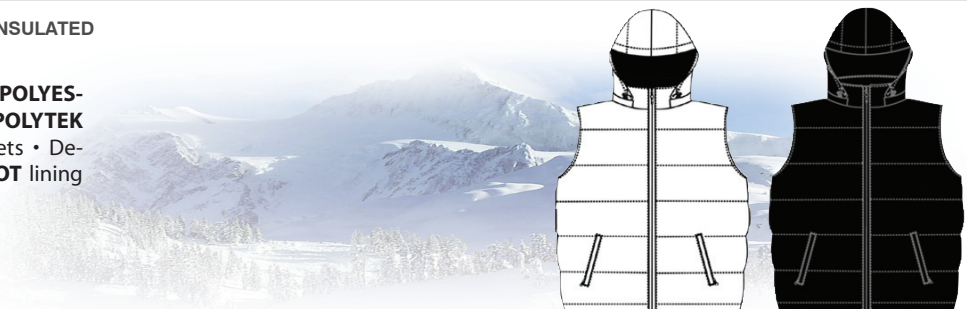
No. 5497
BROWN

SAPPHIRE

LADIES INSULATED

- **SOFT-TOUCH POLYTEK MICRO POLYESTER** outer shell • Taffeta lining • **POLYTEK** insulation • 2 zippered waist pockets • Detachable insulated hood with **TRICOT** lining • Inner chest pocket

Sizes: S, M, L, XL



Vest:
Lining:

No. 8836
WHITE
BLACK

No. 8835
BLACK
BLACK